



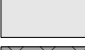

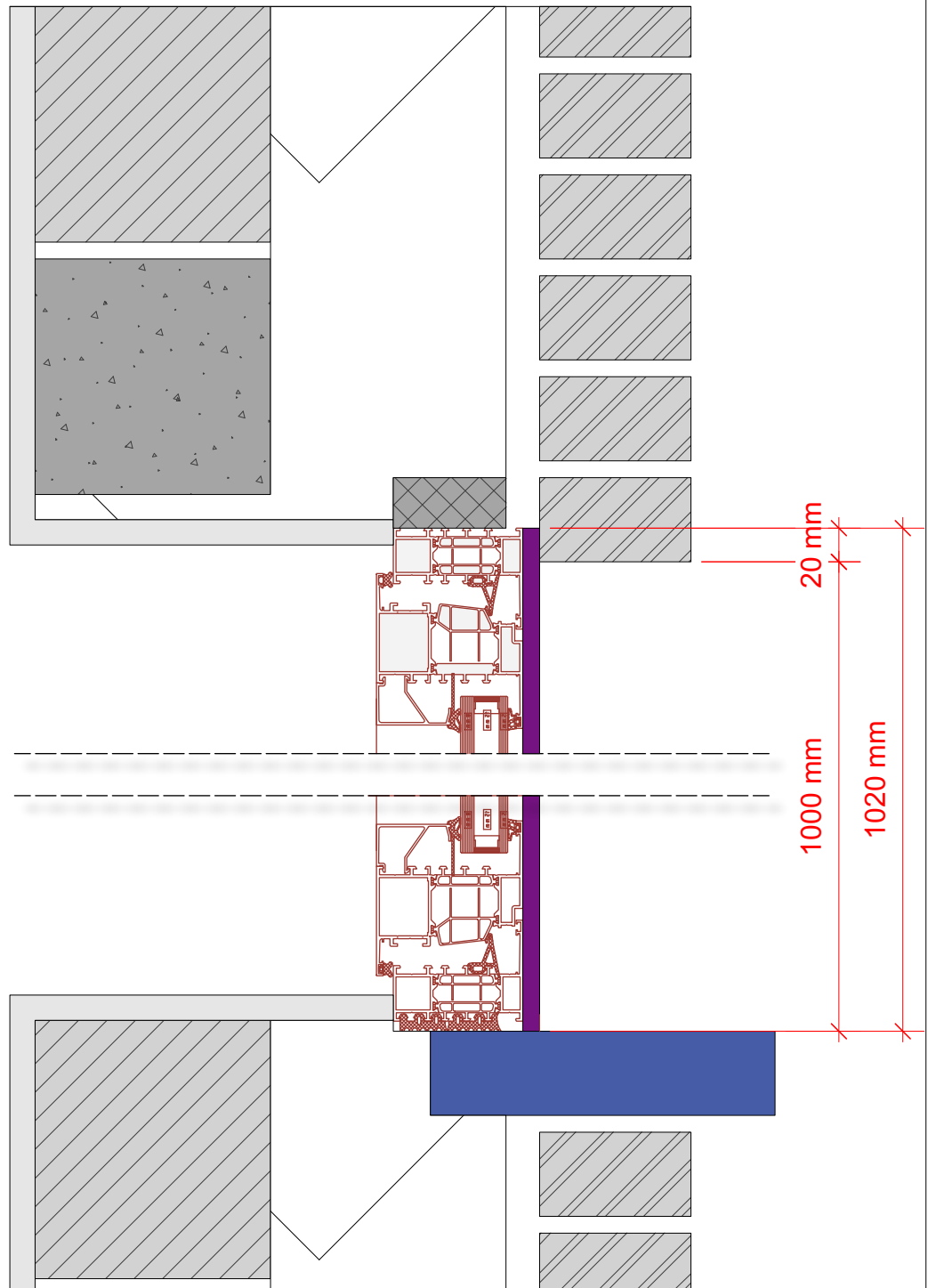


-  Gevelsteen
-  Isolatie
-  Balk
-  Snelbouw
-  Compriband
-  Dorpel
-  Beploistering
-  Pur-schuim



Dagmaat (tussen gevelsteen) = 1000mm in dit voorbeeld
Hoogte raam = Dagmaat + 20 mm

PROJECT		Opmeting hoogte met slag		PROJECT #
KLANT	Vast + opengaand raam	DATUM		TEK #
TEK		SCHAAL		Nr.
		MAKER		
		CHCK		